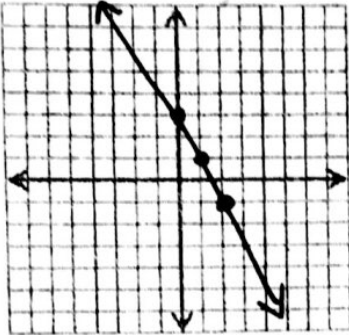


Graph the parent functions and the transformations. List the transformations below the graph.

1. $y = -2x + 3$



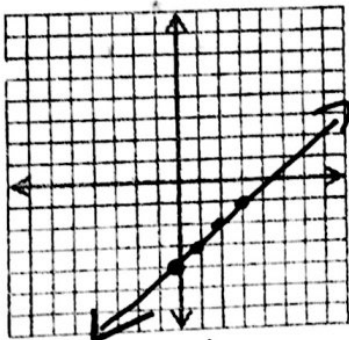
Stretch (2)

ROX

Up 3

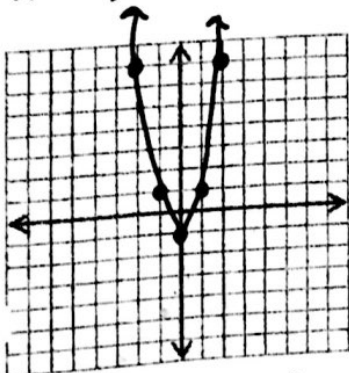
4. $y = x - 4$

shift



Down 4

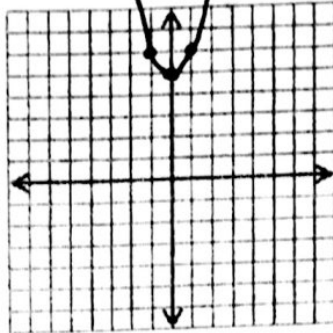
7. $y = 2x^2 - 1$



Stretch (2)

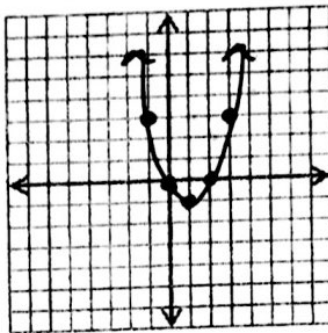
Down 1

2. $y = x^2 + 5$



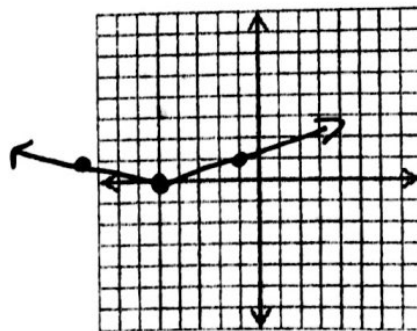
Up 5

5. $y = (x - 1)^2 - 1$



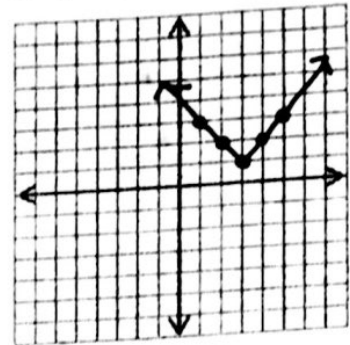
Right 1
Down 1

8. $y = \frac{1}{4}|x + 5|$



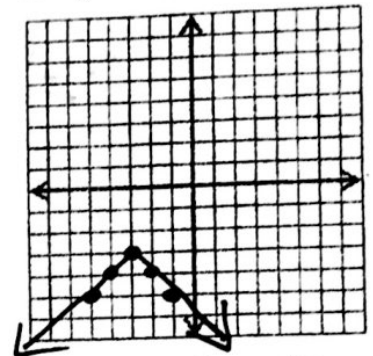
Left 5
Comp (1/4)

3. $y = |x - 3| + 1$



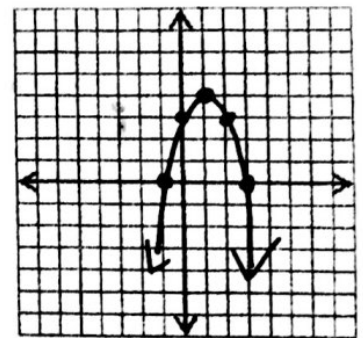
Right 3
up 1

6. $y = -|x + 3| - 3$



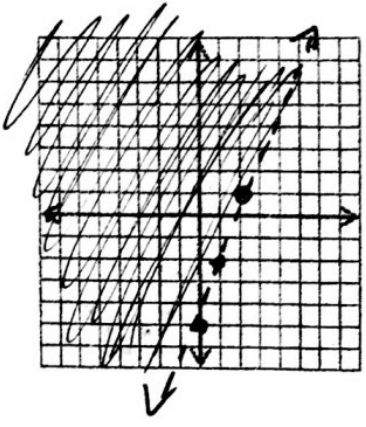
Left 3 Down 3
ROX

9. $y = -(x - 1)^2 + 4$

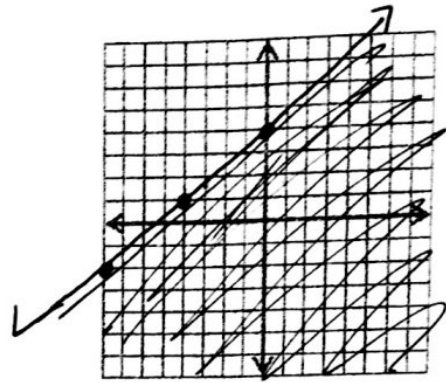


Right 1
Up 4
ROX

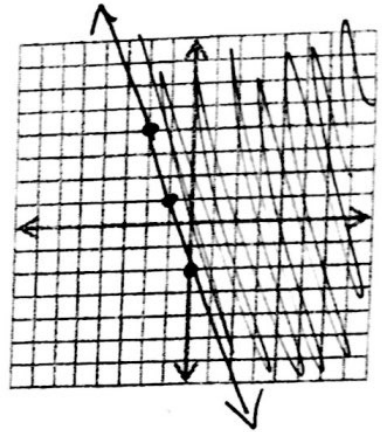
1. $y > 3x - 5$



2. $y \leq \frac{3}{4}x + 4$

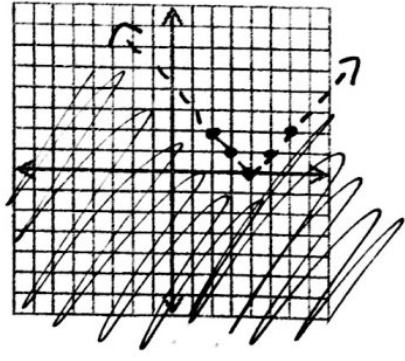


3. $y \geq -3x - 2$

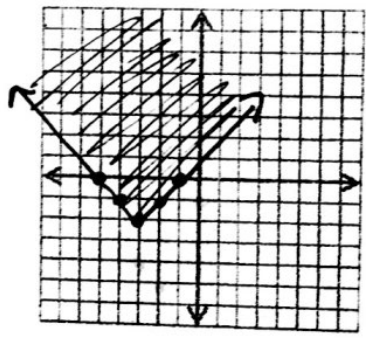


Right 4

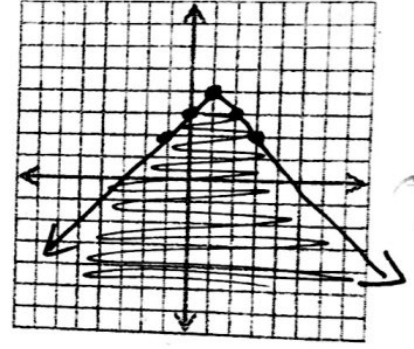
4. $y < |x - 4|$



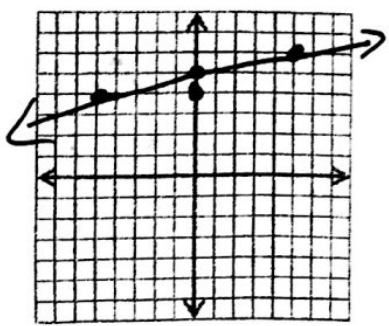
5. $y \geq |x + 3| - 2$



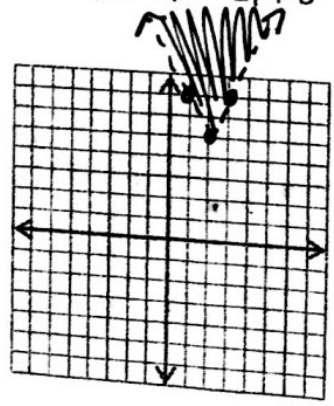
6. $y \leq -|x - 1| + 4$



7. $y = \frac{1}{5}x + 5$



8. $y > 2|x - 2| + 5$



9. $y < -|x| - 3$

