

Algebra II – Absolute Value Functions WS #2

Name Key
 Date _____ Period _____

Graphing $y = a|x-h|+k$

1) Write the absolute value function given the following conditions.

A) ROX, Shift right 3, up 5

$$y = -|x-3|+5$$

B) Shift left 10, down 1, Comp (.5)

$$y = 0.5|x+10|-1$$

C) ROX, Vertex at (8, -7)

$$y = -|x-8|-7$$

D) Vertex at (-1, 9), Stretch (3)

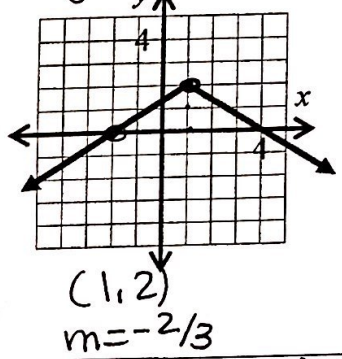
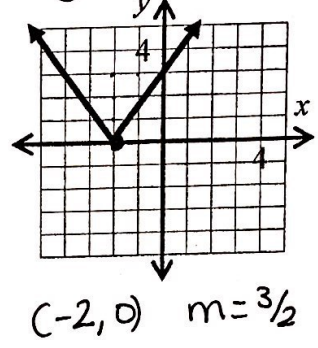
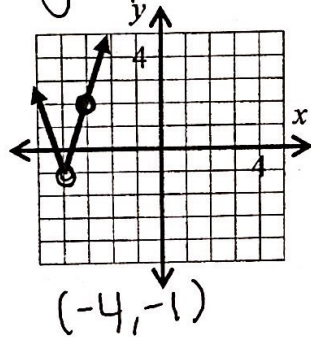
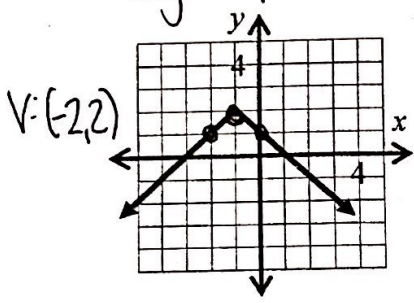
$$y = 3|x+1|+9$$

E) $y = -|x+2|+2$

F) $y = 3|x+4|-1$

G) $y = \frac{3}{2}|x+2|$

H) $y = -\frac{2}{3}|x-1|+2$



Graph. Identify the vertex.

